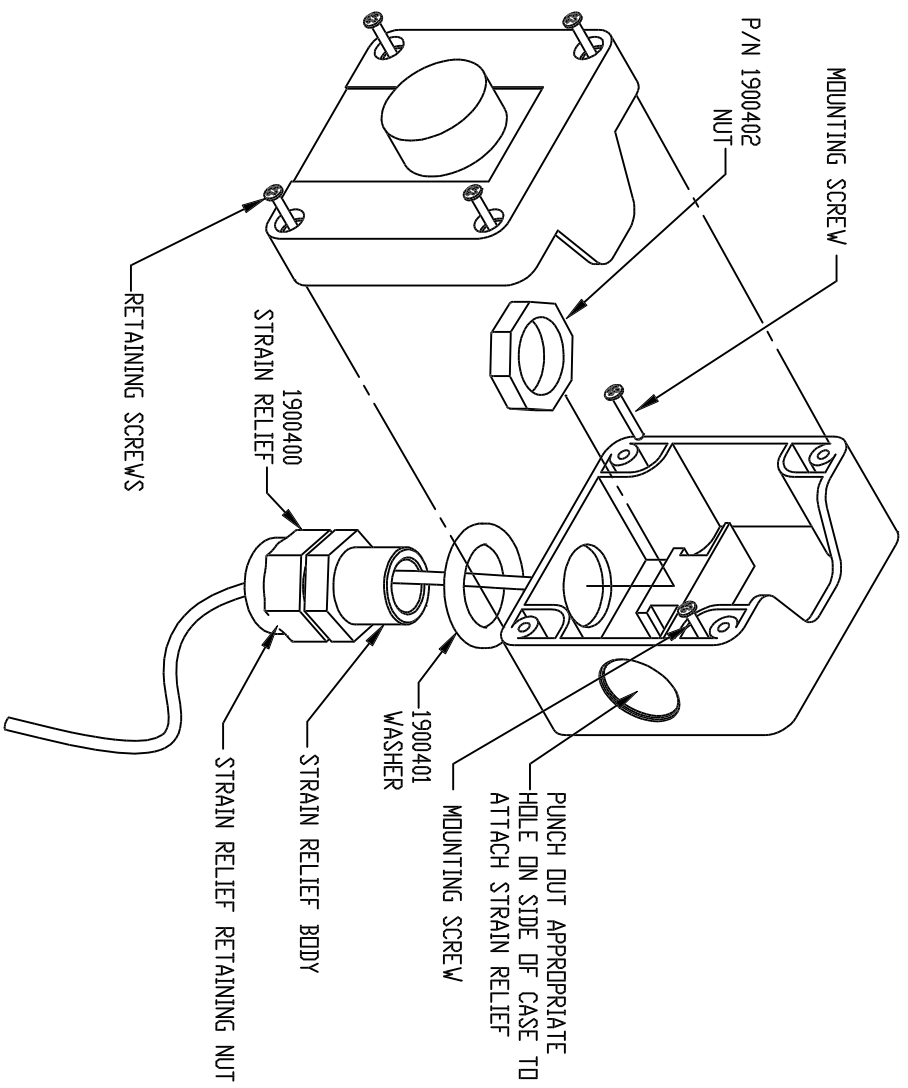


UNLESS OTHERWISE SPECIFIED  
 DIMENSIONS ARE IN INCHES  
 TOLERANCES ARE  
 FRACTIONS DECIMALS ANGLES  
 ±.015 ±.005 ±.02 ±.5°  
 DRAWN BY: 10/31/01  
 AIR BUUSE  
 ENGINEER: 10/31/01  
 T.N.  
 MATERIAL:  
 COLOR:  
 SIZE DWG. NO. 0900839  
 SCALE 1:1 CAD FILE 0900839 SHEET 1 OF 1  
 DESCRIPTION DATE  
 REL 4106 INITIAL RELEASE 10/31/01

KNIGHT  
 KNIGHT, INC. A UNIT OF IDEX CORPORATION  
 CONFIDENTIAL  
 IDEX  
 THESE PRINTS ARE THE EXCLUSIVE PROPERTY OF KNIGHT, INC.  
 A UNIT OF IDEX. ANY REPRODUCTION OR USE OF INFORMATION  
 FROM THESE PRINTS WITHOUT THE SPECIFIC CONSENT OF  
 KNIGHT, INC., IN WRITING IS PROHIBITED

DRAWING TITLE:		INSTRUCTION REMOTE SWITCH	
ENGINEER:	T.N.	DATE:	10/31/01
REVISOR:	10/31/01	SCALE:	1:1
MATERIAL:		DESCRIPTION:	
COLOR:		REL:	4106
REV #:	ED #	INITIAL RELEASE:	10/31/01



- 1) LOOSEN RETAINING SCREWS ON THE FRONT COVER
- 2) REMOVE COVER FROM ASSEMBLY
- 3) PUNCH OUT APPROPRIATE CUTOUT FROM CASE
- 4) LOOSEN RETAINING NUT ON THE STRAIN RELIEF
- 5) FEED THE WIRE THROUGH STRAIN RELIEF, WASHER AND CASE
- 6) FEED STRAIN RELIEF BODY THROUGH CUTOUT ON THE CASE
- 7) TIGHTEN NUT TO STRAIN RELIEF BODY
- 8) WIRE PER WIRING DIAGRAM
- 9) MOUNT CASE TO WALL USING APPROPRIATE MOUNTING HARDWARE SUPPLIED
- 10) PLACE FRONT COVER BACK ONTO CASE
- 11) TIGHTEN RETAINING SCREWS

